

STANDARD DEPARTURE CHART INSTRUMENT

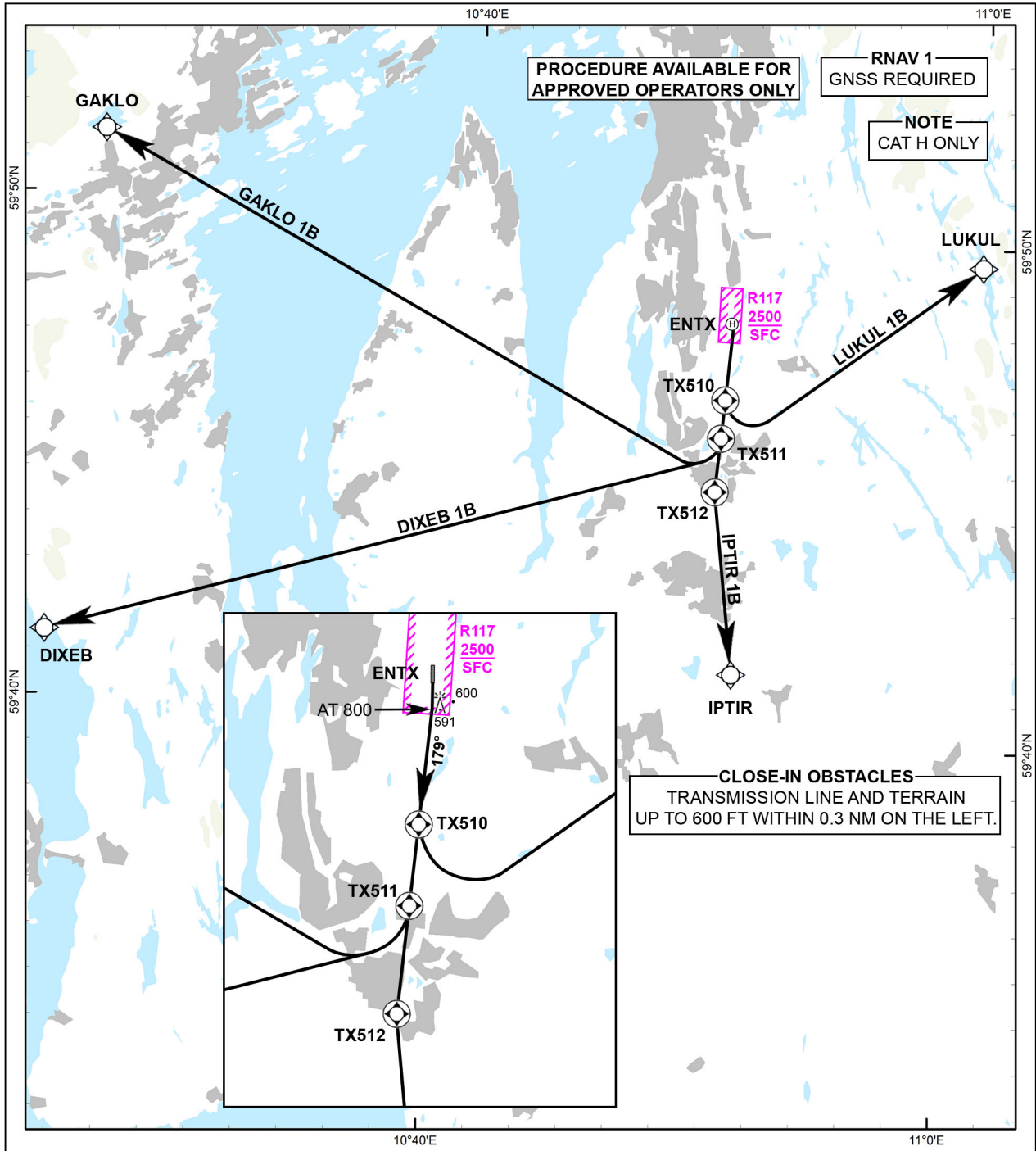
34
MSA 25 NM HRP

OSLO ATIS: 126.125
OSLO APP: 118.475 120.450
GARDERMOEN TWR: 120.100 (123.325)
OSLO TRAFFIC: 122.000

ALT AND ELEV ARE IN FT
DIST IN NM
VAR: 4°E (2020) TA: 7000

TARALDRUD (ENTX)
FATO 17
NORWAY

DIXEB 1B, GAKLO 1B, LUKUL 1B, IPTIR 1B



TAKE-OFF MINIMA: RVR 400 M
LOW VISIBILITY TAKE-OFF: NOT APPROVED

CHANGES: AIRSPACE R117 ADDED.

**STANDARD DEPARTURE ROUTES -
INSTRUMENT**
ENTX/Taraldrud
FATO 17

DESIGNATOR	ROUTE	RESTRICTIONS	CLIMB TO	CONTACT
DIXEB 1B (DIXEB ONE BRAVO DEPARTURE)	Climb on course 172° to 800 FT, turn right to intercept course 179° to TX511. At TX511 turn right DCT DIXEB.	Standard climb gradient 5% (304 FT/NM)	2300 FT	-
GAKLO 1B (GAKLO ONE BRAVO DEPARTURE)	Climb on course 172° to 800 FT, turn right to intercept course 179° to TX511. At TX511 turn right DCT GAKLO.	Standard climb gradient 5% (304 FT/NM)	2200 FT	-
IPTIR 1B (IPTIR ONE BRAVO DEPARTURE)	Climb on course 172° to 800 FT, turn right to intercept course 179° to TX512. At TX512 turn left DCT IPTIR.	Standard climb gradient 5% (304 FT/NM)	1800 FT	-
LUKUL 1B (LUKUL ONE BRAVO DEPARTURE)	Climb on course 172° to 800 FT, turn right to intercept course 179° to TX510. At TX510 turn left DCT LUKUL.	MNM climb gradient 8.6% (523 FT/NM) to 900 FT.	2200 FT	-