

STANDARD DEPARTURE CHART INSTRUMENT

34
MSA 25 NM HRP

OSLO ATIS: 126.125
OSLO APP: 118.475 120.450
GARDERMOEN TWR:
120.100 (123.325)
OSLO TRAFFIC: 122.000

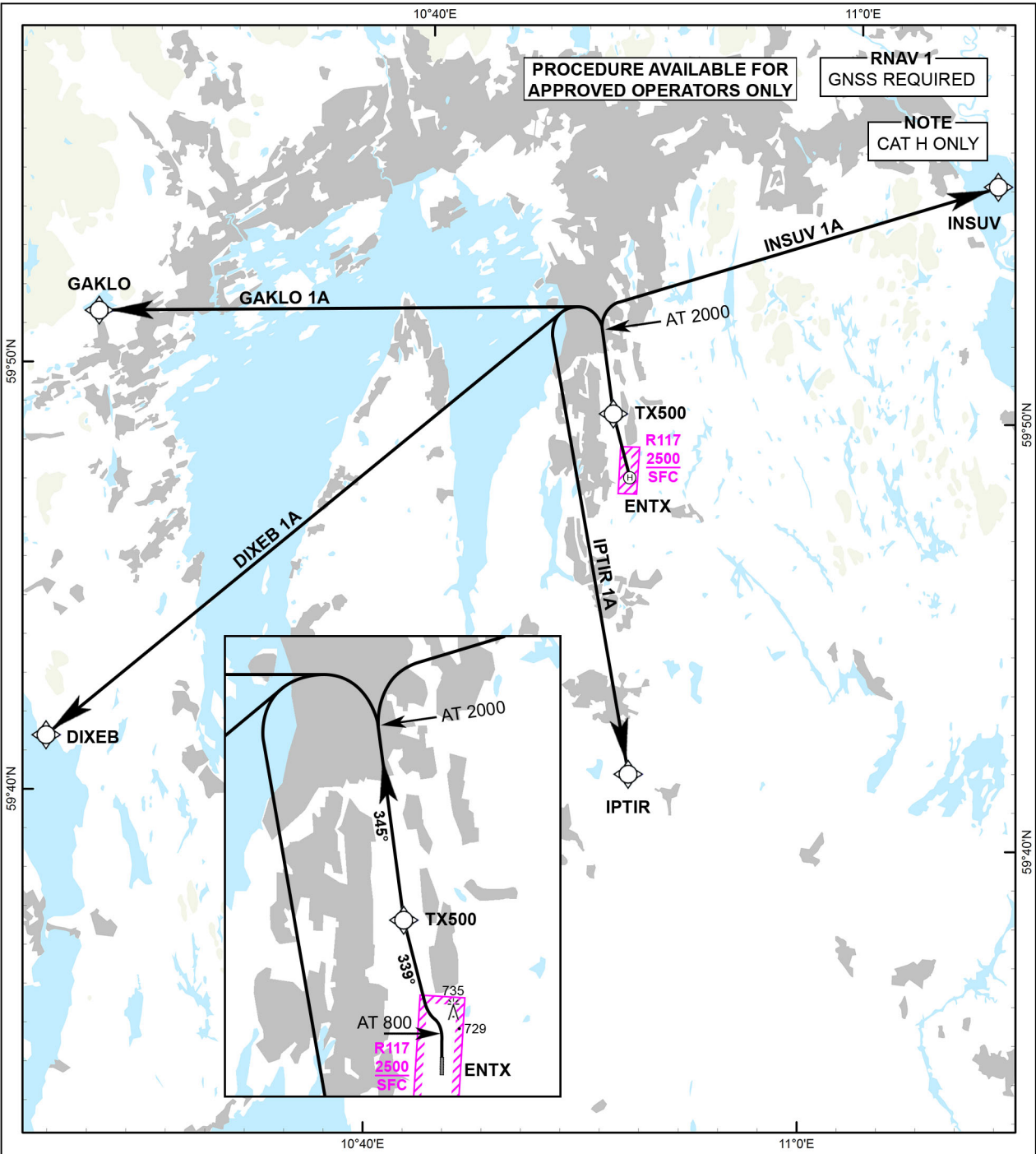
ALT AND ELEV ARE IN FT
DIST IN NM

VAR: 4°E (2020)

TA: 7000

TARALDRUD (ENTX)
FATO 35
NORWAY

DIXEB 1A, GAKLO 1A, INSUV 1A, IPTIR 1A



TAKE-OFF MINIMA: RVR 400 M

LOW VISIBILITY TAKE-OFF: NOT APPROVED

CHANGES: AIRSPACE R117 ADDED.

**STANDARD DEPARTURE ROUTES -
INSTRUMENT**

ENTX/Taraldrud

FATO 35

DESIGNATOR	ROUTE	RESTRICTIONS	CLIMB TO	CONTACT
DIXEB 1A (DIXEB ONE ALFA DEPARTURE)	Climb on course 352° to 800 FT, turn left to intercept course 339° to TX500. Climb from TX500 on course 345°, when passing 2000 FT turn left DCT DIXEB.	MNM climb gradient 10.2% (620 FT/NM) to 800 FT.	2300 FT	-
GAKLO 1A (GAKLO ONE ALFA DEPARTURE)	Climb on course 352° to 800 FT, turn left to intercept course 339° to TX500. Climb from TX500 on course 345°, when passing 2000 FT turn left DCT GAKLO.	MNM climb gradient 10.2% (620 FT/NM) to 800 FT.	2200 FT	-
INSUV 1A (INSUV ONE ALFA DEPARTURE)	Climb on course 352° to 800 FT, turn left to intercept course 339° to TX500. Climb from TX500 on course 345°, when passing 2000 FT turn right DCT INSUV.	MNM climb gradient 10.2% (620 FT/NM) to 800 FT.	2400 FT	-
IPTIR 1A (IPTIR ONE ALFA DEPARTURE)	Climb on course 352° to 800 FT, turn left to intercept course 339° to TX500. Climb from TX500 on course 345°, when passing 2000 FT turn left DCT IPTIR.	MNM climb gradient 10.2% (620 FT/NM) to 800 FT.	2000 FT	-