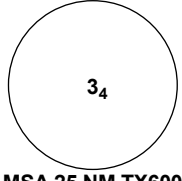
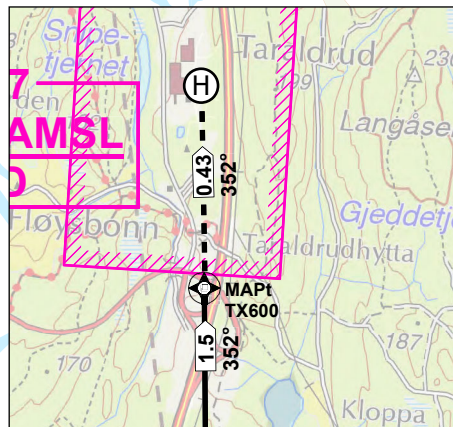
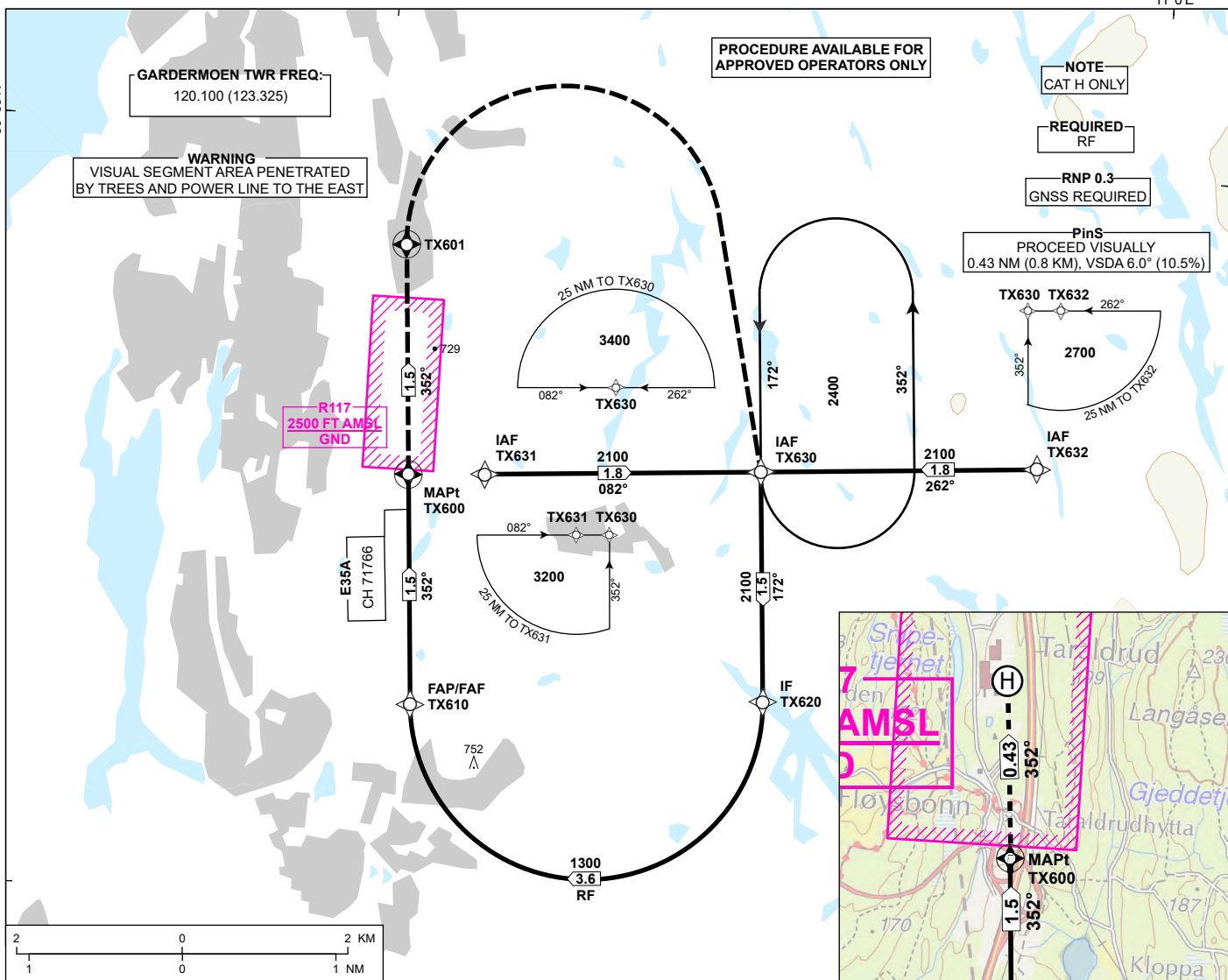


# INSTRUMENT APPROACH CHART - ICAO

**ENTX / TARALDRUD**  
**RNP 352 (LPV only)**  
 TRANSITION ALTITUDE  
 7000

	OSLO ATIS: 126.125	HRP ELEV: 498
	OSLO APP: 118.475	
		120.450 HGT RELATED TO HRP
	OSLO TRAFFIC: 122.000	
DIST IN NM. ELEV, ALT AND HGT IN FT		
SCALE 1:80 000	VAR 4° E (2020)	

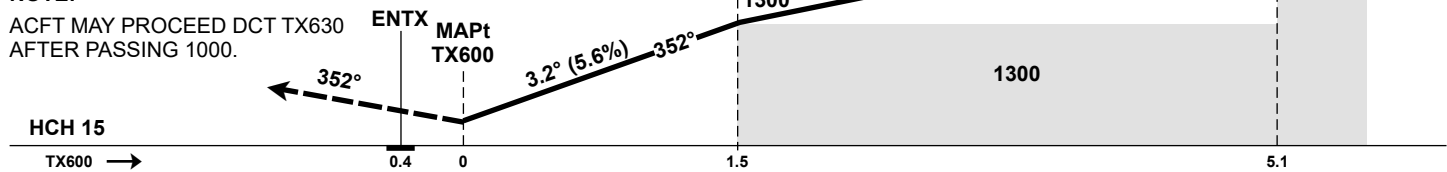


DIST TO TX600	1.5	1.0	0.5
ALT (HGT)	1300 (802)	1130 (632)	960 (462)

**MISSED APPROACH:**  
 CLIMB STRAIGHT AHEAD TO TX601,  
 TURN RIGHT DCT TX630.  
 ENTER TX630 HOLDING AT 2400.

NOTE: MAX 70 KT IAS IN FINAL

**NOTE:**  
 ACFT MAY PROCEED DCT TX630  
 AFTER PASSING 1000.



CAT OF ACFT		H	<b>VIS 800 m</b>
OCA (H) STRAIGHT- IN	LPV 10%*	788 (290)	
	-	-	
	-	-	
CIRCLING		-	

NOTE: \*MISSED APCH CLIMB GRADIENT (10%) APPLICABLE TO 1000, then 4.2%

CHANGES: TX601.

**ENTX RNP 352 (LPV only) - RECOMMENDED CODING**

SN	PD	WI	Fly-over	°M (°T)	MAG VAR	DIST (NM)	REC NAVAID	TD	ALT (FT)	Speed (KT)	VPA (°)/ TCH (FT)	ARC CENTRE RADIUS (NM)	RNP (NM)
010	IF	TX631	-	-	-4.0	-	-	-	-	-	-	-	-
020	TF	TX630	-	-	-4.0	1.8	-	-	A2100+	-	-	-	0.3
010	IF	TX632	-	-	-4.0	-	-	-	-	-	-	-	-
020	TF	TX630	-	-	-4.0	1.8	-	-	A2100+	-	-	-	0.3
030	TF	TX620	-	-	-4.0	1.5	-	-	A2100+	-	-	-	0.3
040	RF	TX610	-	-	-4.0	3.6	-	R	A1300+	-	-	TX615 1.15	0.3
050	TF	TX600	Y	-	-4.0	1.5	-	-	-	K070-	-3.2/-	-	0.3
060	CF	TX601	Y	-	-4.0	1.5	-	-	-	-	-	-	0.3
070	DF	TX630	-	-	-4.0	-	-	R	A2400	-	-	-	0.3
080	HM	TX630	-	172 (176.0)	-4.0	1 MIN	-	L	A2400+	-	-	-	1.0

Note: Recommended coding is based on ARINC 424 and is provided solely to indicate which procedure design protection areas were used in the Instrument Flight Procedure Design process.

**FAS DB**

Operation type	0	LTP/FTP ellipsoidal height	228.9
SBAS provider	1	FPAP latitude	594935.2430N
Airport identifier	ENTX	FPAP longitude	0105015.1620E
Runway	35	Threshold crossing height	50
Approach performance designator	0	TCH units	FT
Route indicator	-	Glide path angle	3.2
Reference path data selector	0	Course width at threshold	105
Reference path identifier	E35A	Length offset	0
LTP/FTP latitude	594808.3710N	Horizontal alert limit (HAL)	40
LTP/FTP longitude	0105027.2270E	Vertical alert limit (VAL)	35
		PRECISION APPROACH PATH CRC REMAINDER	CD6DE58D