



Last updated 22 APR 2021

## **Procedures for operations to/from Deepsea Nordkapp/Stangnestind**

A temporary route has been established from Kirkenes Airport (ENKR) to the rig Deepsea Nordkapp at Stangnestind oilfield.

Routing: KIK – VRD – ABMOT – EDIXA – GITAG – VRD/90 – VRD/120 – 723854.3930N 0345049.2920E (Stangnestind).

### **2.1 Communication**

2.1.1. Polaris ACC Bodø Sector 26 is the responsible ATS-unit for all helicopter operations outside Kirkenes TMA and Vardø TIZ. The ATS-unit does not have VHF coverage in the area.

2.1.2. Vardø AFIS is responsible for the helicopter communication within VHF radio coverage (approx. 100 NM from VRD) and will ensure necessary coordination with Polaris ACC Bodø. The PIC shall provide Vardø AFIS with all estimates.

2.1.3. Vardø AFIS is responsible for estimates and position reports for VRD, ABMOT, EDIXA and GITAG. Vardø AFIS will not relay these to Polaris ACC Bodø, except for estimate for GITAG (and for the destination on the return flight). In case of missing position reports, ref. Para 2. Alerting Service

2.1.4. The PIC shall provide Vardø AFIS with estimates for GITAG and Stangnestind after departure. Vardø AFIS will relay these to Polaris ACC Bodø Sector 26.

2.1.5. Polaris ACC Bodø coordinates the estimates for GITAG and Stangnestind with Murmansk ACC.

2.1.6. The PIC shall provide Polaris ACC Bodø with an “on deck” report (ATA) from Deepsea Nordkapp/Stangnestind via telephone +47 75 54 29 10 (Sector 26) or +47 75 54 29 00 (Supervisor). The PIC shall provide an ETD from the rig along with the ATA.

2.1.7. Polaris ACC Bodø coordinates ATA and ETD with Murmansk ACC.

2.1.8. SATCOM shall be used outside VHF – coverage for position reports and on-deck report (Sector 26 TEL +47 75 54 29 10).

## **2.2 Alerting Service**

2.2.1 Procedures for Alerting Service for helicopter operations on Norwegian Continental Shelf, ref. Avinor Helicopter Manual

2.2.2. SATCOM shall be used outside VHF – coverage for position reports, e.g at positions from DME VRD/90, DME VRD/120 and INSUX, ref. 2.1.8

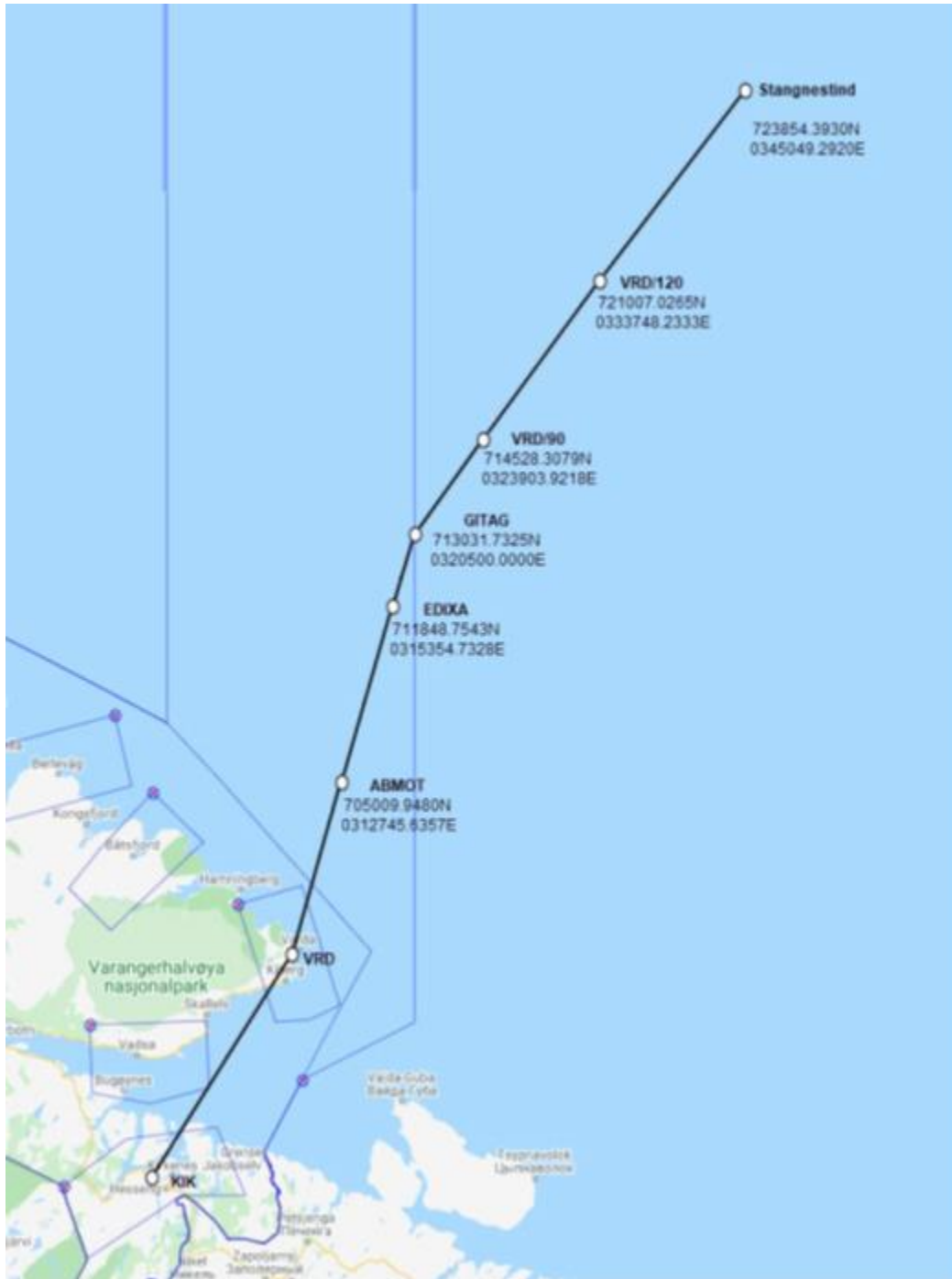
2.2.3 Polaris ACC Bodø is responsible for all coordination in conjunction with the Alerting Service (RCC, operator, etc).

## **2.3 Altimeter setting**

2.3.1 There is no Altimeter Setting Area established outside Kirkenes TMA and Vardø TIZ.

2.3.2 The actual Vardø QNH shall be used inside, optional outside, DME VRD 100 along the route to/from Stangnestind.

2.3.3 Vardø AFIS will provide the actual QNH for traffic along the route to/from Stangnestind.



KIK	694325.6505N 0295208.8019E
VRD	702127.5213N 0310250.0478E
ABMOT	705009.9480N 0312745.6357E
EDIXA	711848.7543N 0315354.7328E
GITAG	713031.7325N 0320500.0000E
VRD/90	714528.3079N 0323903.9218E
VRD/120	721007.0265N 0333748.2333E
STANGNESTIND	723854.3930N 0345049.2920E