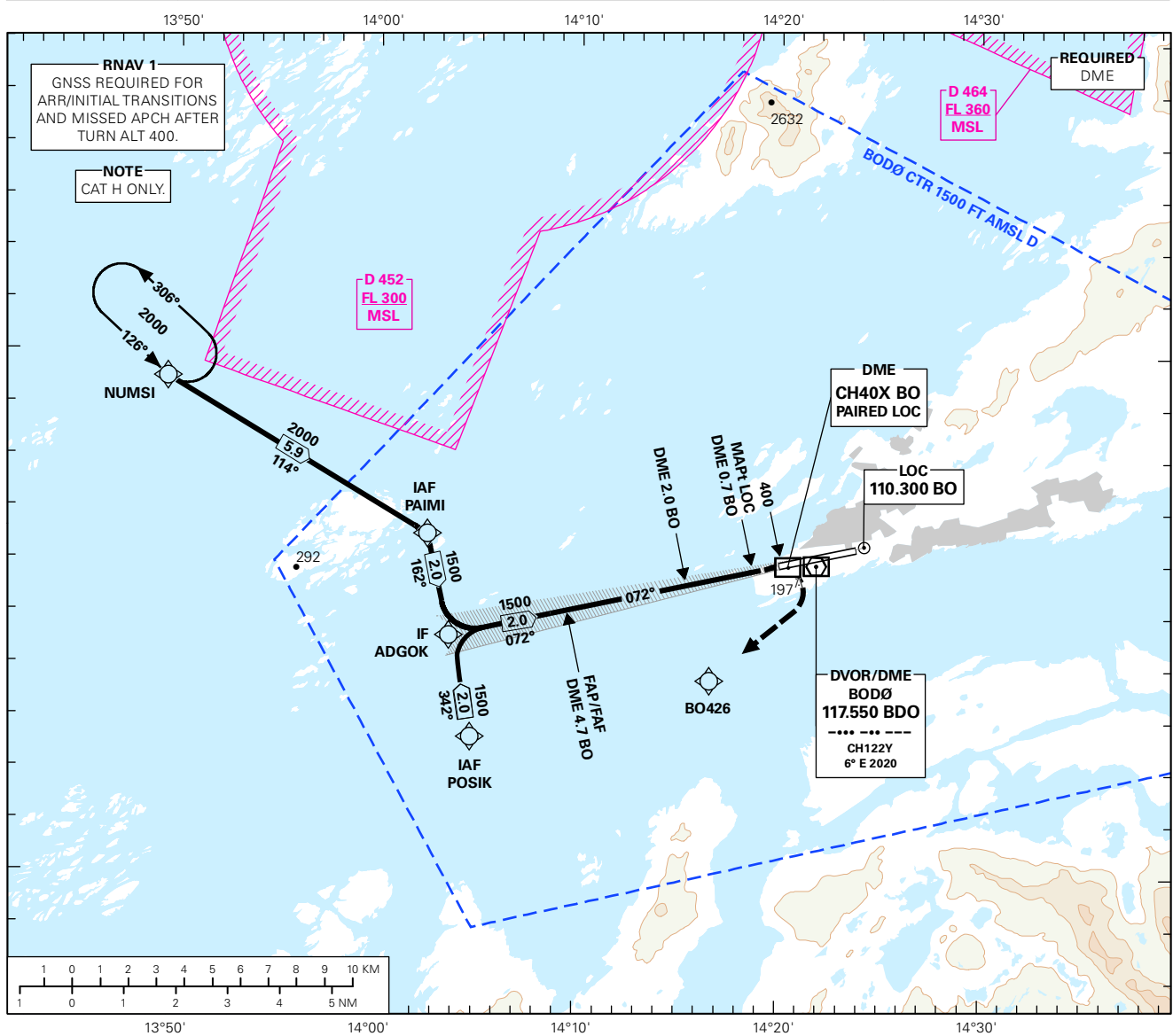


INSTRUMENT APPROACH CHART - ICAO PLAN VIEW SCALE: 1:250 000

<p>MSA 25 NM BDO</p>	ATIS: 123.900	AD ELEV: 44	DIST IN NM	<p>BODØ</p> <p>BODØ</p> <p>ILSY or LOC Y RWY 07</p> <p>TRANSITION ALTITUDE 7000</p>
	APP: 119.700 124.000	THR ELEV: 19		
	TWR: 118.100	HGT RELATED TO THR RWY 07	ELEV, ALT AND HGT IN FT	
	CIRCLING HGT RELATED TO AD ELEV		BEARINGS ARE MAGNETIC - VAR: 6° E (2020)	



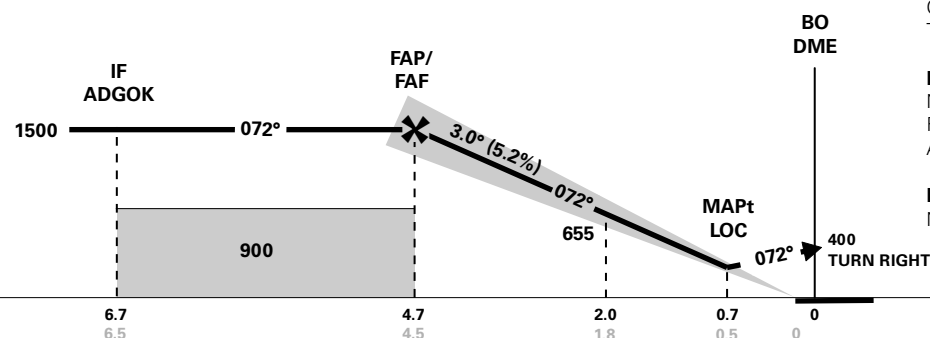
DIST TO BO	9	8	7	6	5	4	3	2
ALT (HGT)	-	-	-	-	-	1300 (1281)	980 (961)	650 (631)

ILS RDH 50

MISSED APCH:
CLIMB RWY TRACK TO 400. THEN RIGHT CLIMBING TURN DCT BO426. TO POSIK. TO NUMSI. ENTER NUMSI HLDG AT 2000.

NOTE:
NOT RECOMMENDED TO USE AUTO COUPLED RNAV UNTIL REACHING 400 IN THE MISSED APCH SEGMENT.

NOTE:
NOTURN BEFORE DME 0.7 BO.



CAT OF ACFT		H			
OCA(H) STRAIGHT - IN	CAT I	227 (208)	-	-	-
	LOC	350 (331)	-	-	-
CIRCLING		-	-	-	-

NOTE: VISUAL MANOEUVRING S OF AD ONLY.

CHANGES: FREQ. 122.100 REMOVED.