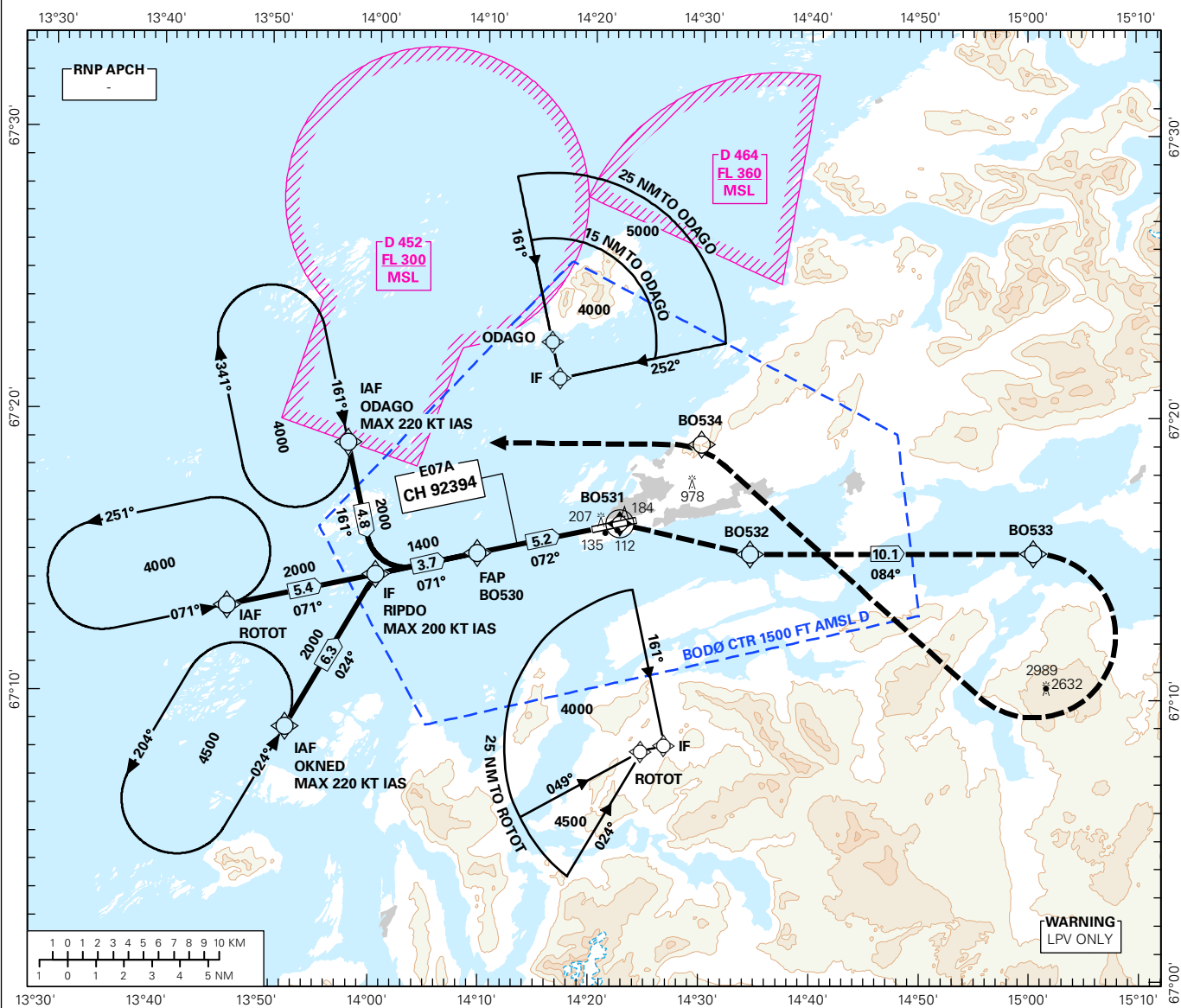


INSTRUMENT APPROACH CHART - ICAO PLAN VIEW SCALE: 1:450 000

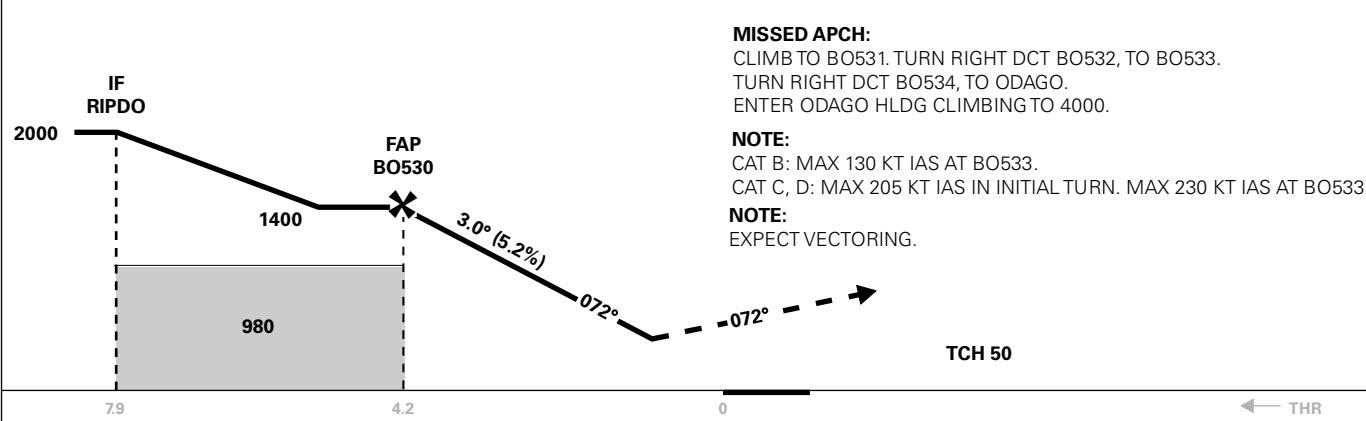
ATIS: 123.900	AD ELEV: 44
APP: 119.700 124.000	THR ELEV: 19
	DIST IN NM
	HGT RELATED TO THR RWY 07
TWR: 118.100	ELEV, ALT AND HGT IN FT
	CIRCLING HGT RELATED TO AD ELEV
	BEARINGS ARE MAGNETIC - VAR: 6° E (2020)

BODØ
BODØ
RNP X RWY 07 (LPV only)
TRANSITION ALTITUDE
7000

ATIS AIRSPACE CLASSIFICATION: REF ENR 1.4.



DIST TO RWY07	9	8	7	6	5	4	3	2
ALT (HGT)	-	-	-	-	-	1350 (1331)	1030 (1011)	710 (691)



MISSED APCH:
 CLIMB TO BO531. TURN RIGHT DCT BO532, TO BO533.
 TURN RIGHT DCT BO534, TO ODAGO.
 ENTER ODAGO HLDG CLIMBING TO 4000.

NOTE:
 CAT B: MAX 130 KT IAS AT BO533.
 CAT C, D: MAX 205 KT IAS IN INITIAL TURN. MAX 230 KT IAS AT BO533.

NOTE:
 EXPECT VECTORING.

CAT OF ACFT		A	B	C	D
OCA(H) STRAIGHT - IN	LPV 2.5%*	359 (340)	493 (474)	556 (537)	567 (548)
	LPV 3.0%*	347 (328)	359 (340)	367 (348)	378 (359)
CIRCLING		570 (526)	1060 (1016)	1300 (1256)	

NOTE: CIRCLING S OF AD ONLY. *MNM MISSED APCH CLIMB GRADIENT.

CHANGES: FREQ. 122.100 REMOVED.