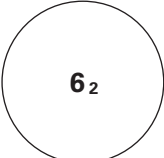
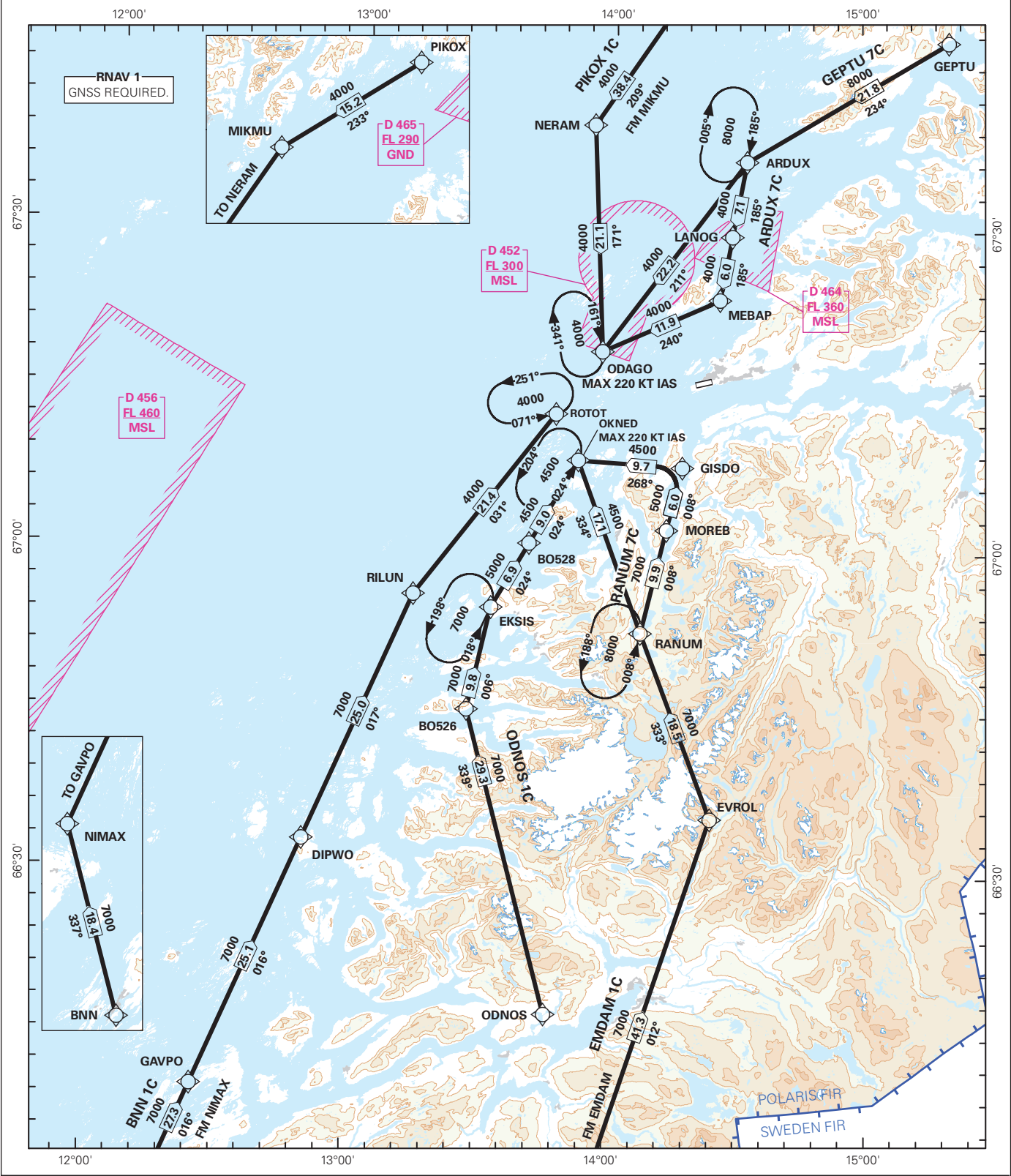


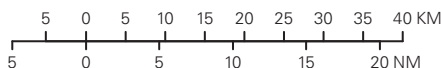
STANDARD ARRIVAL CHART INSTRUMENT - ICAO (RNAV)

 <p>MSA 25 NM ARP</p>	ATIS: 123.900	<p>ALT AND ELEV ARE IN FT DIST IN NM</p> <p>1:1 000 000 VAR: 6° E (2020) TA 7000</p>	<p>BODØ RWY 07 NORWAY</p>
	APP: 119.700 124.000		
	TWR: 118.100		
<p>ARDUX 7C, BNN 1C, EMDAM 1C, GEPTU 7C, ODNOS 1C, PIKOX 1C, RANUM 7C</p>			



STAR DESCRIPTION OVERLEAF
DESCRIPTION OF WAYPOINTS, REF ENR 4.4

ATS AIRSPACE CLASSIFICATIONS: REF ENR 1.4
LEGEND: REF GEN 2.3



CHANGES: FREQ. 122.100 REMOVED.