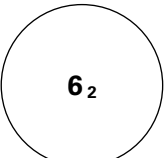
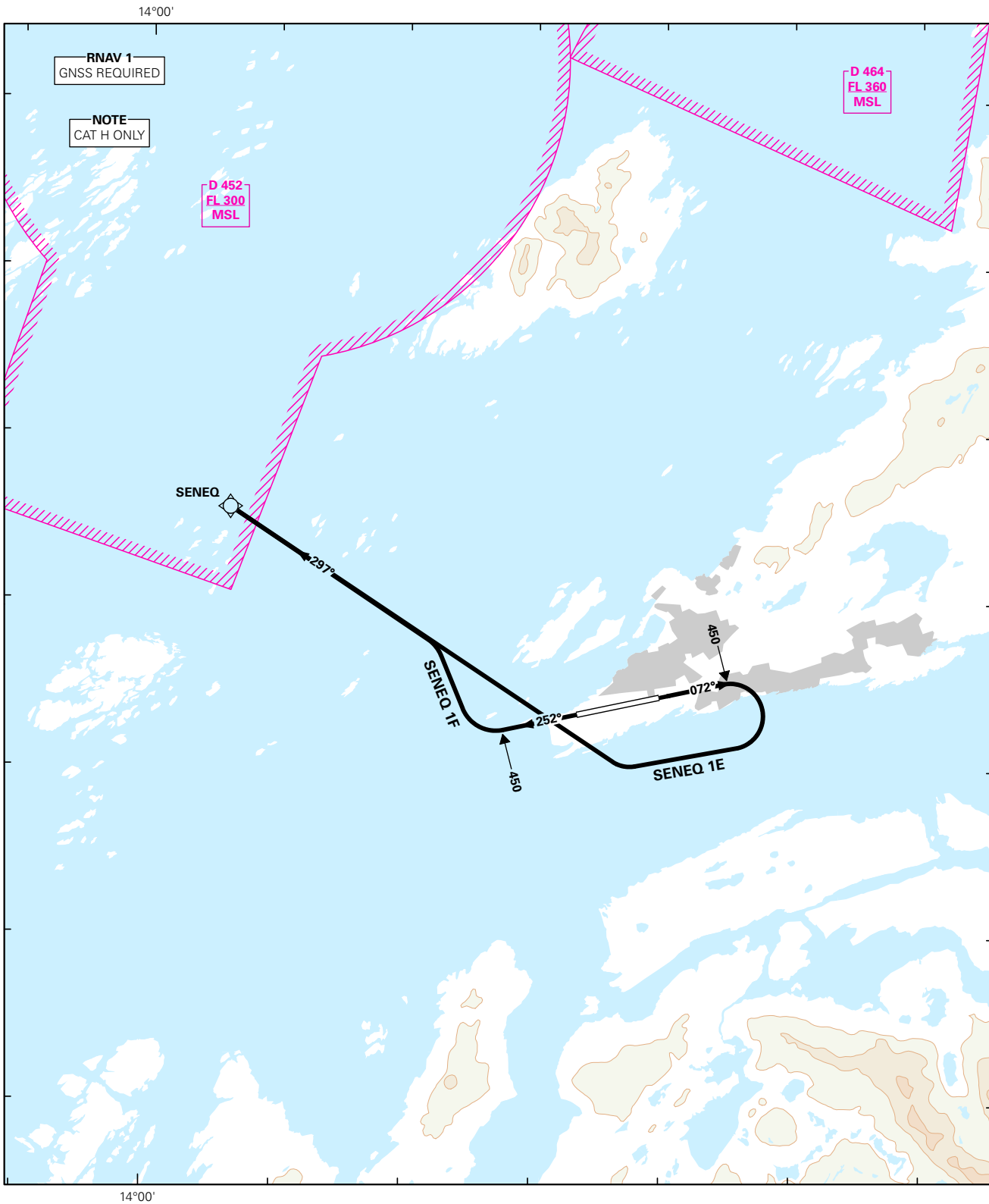


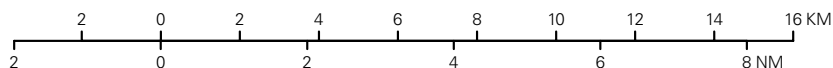
STANDARD DEPARTURE CHART INSTRUMENT - ICAO (RNAV, CAT H)

 <p>MSA 25 NM ARP</p>	ATIS: 123.900	ALT AND ELEV ARE IN FT DIST IN NM		BODØ RWY 07/25 NORWAY SENEQ 1E, SENEQ 1F	
	APP: 119.700 124.000				
	TWR: 118.100	1:200 000	VAR: 6° E (2020)	TA 7000	



SID DESCRIPTION OVERLEAF
DESCRIPTION OF WAYPOINTS, REF ENR 4.4

ATS AIRSPACE CLASSIFICATIONS: REF ENR 1.4
LEGEND: REF GEN 2.3



CHANGES: FREQ. 122.100 REMOVED.