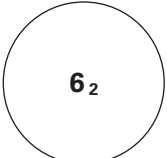
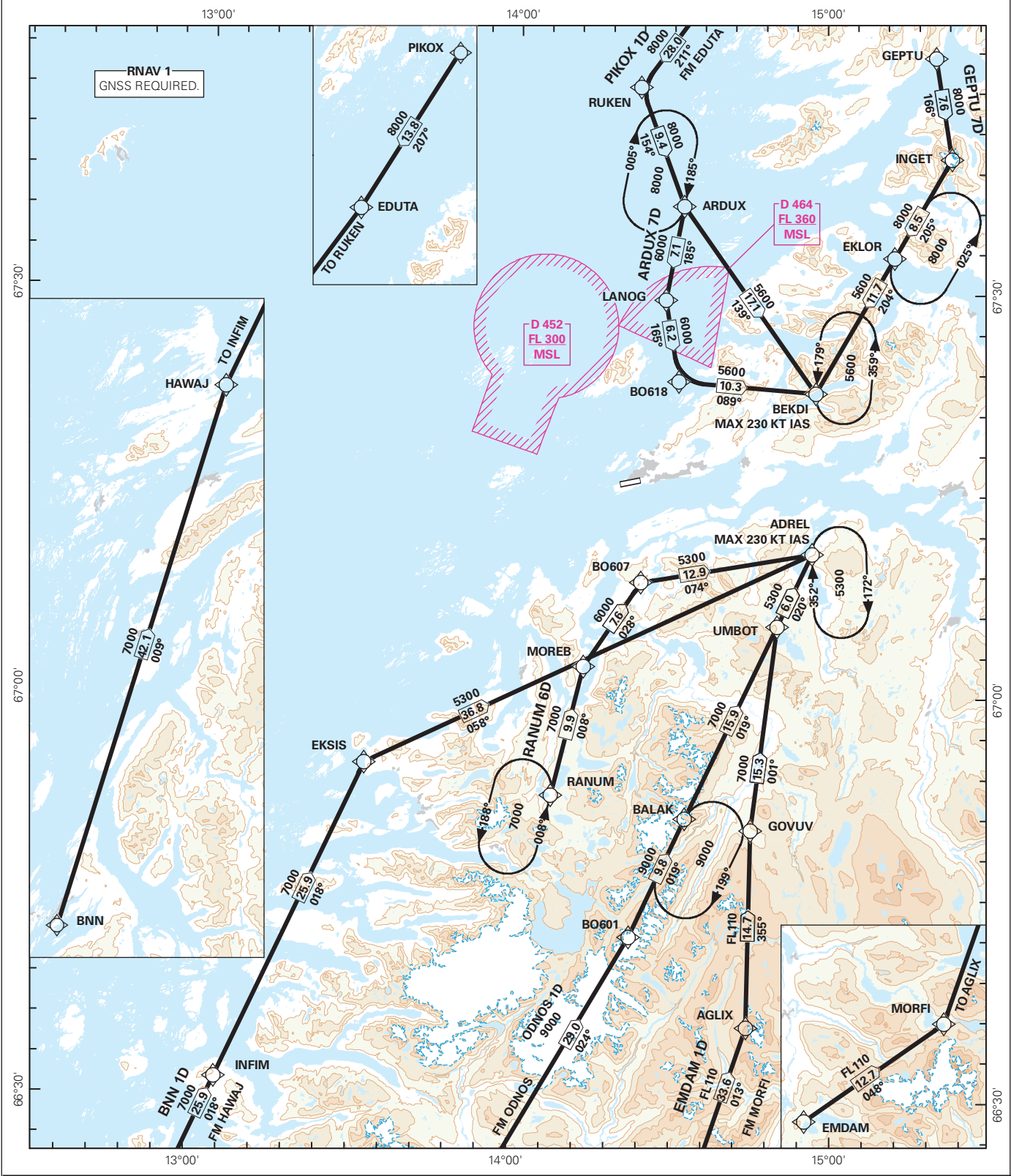


STANDARD ARRIVAL CHART INSTRUMENT - ICAO (RNAV)

 <p>MSA 25 NM ARP</p>	ATIS: 123.900 APP: 119.700 124.000 TWR: 118.100	ALT AND ELEV ARE IN FT DIST IN NM			BODØ RWY 25 NORWAY
		1:800 000	VAR: 6° E (2020)	TA 7000	NORWAY
	ARDUX 7D, BNN 1D, EMDAM 1D, GEPTU 7D, PIKOX 1D, ODNOS 1D, RANUM 6D				



RNAV 1
GNSS REQUIRED.

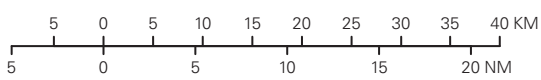
D 452
FL 300
MSL

D 464
FL 360
MSL

MAX 230 KT IAS

STAR DESCRIPTION OVERLEAF
DESCRIPTION OF WAYPOINTS, REF ENR 4.4

ATS AIRSPACE CLASSIFICATIONS: REF ENR 1.4
LEGEND: REF GEN 2.3



CHANGES: FREQ. 122.100 REMOVED.