

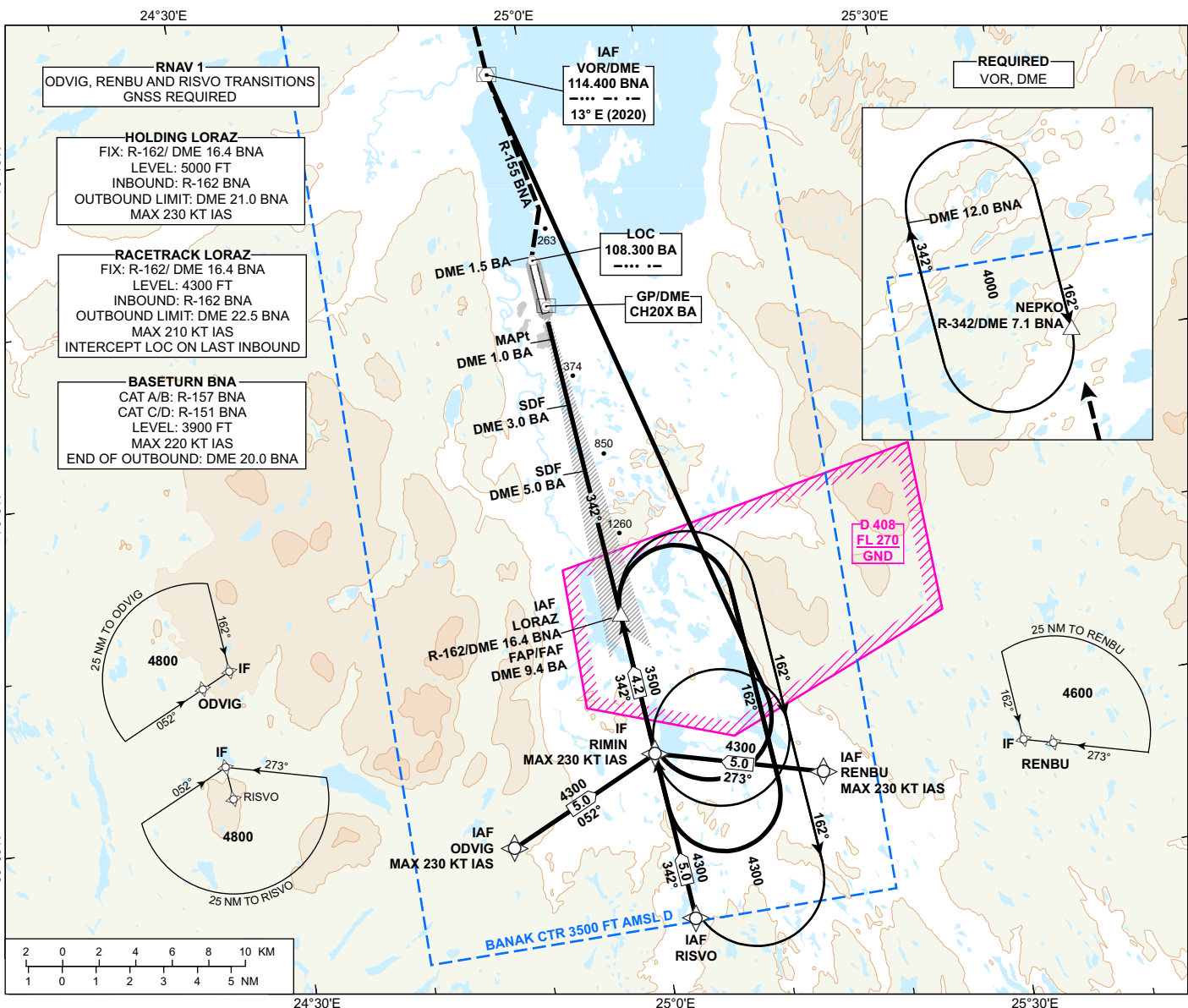
**INSTRUMENT APPROACH CHART - ICAO**

**LAKSELV  
BANAK**

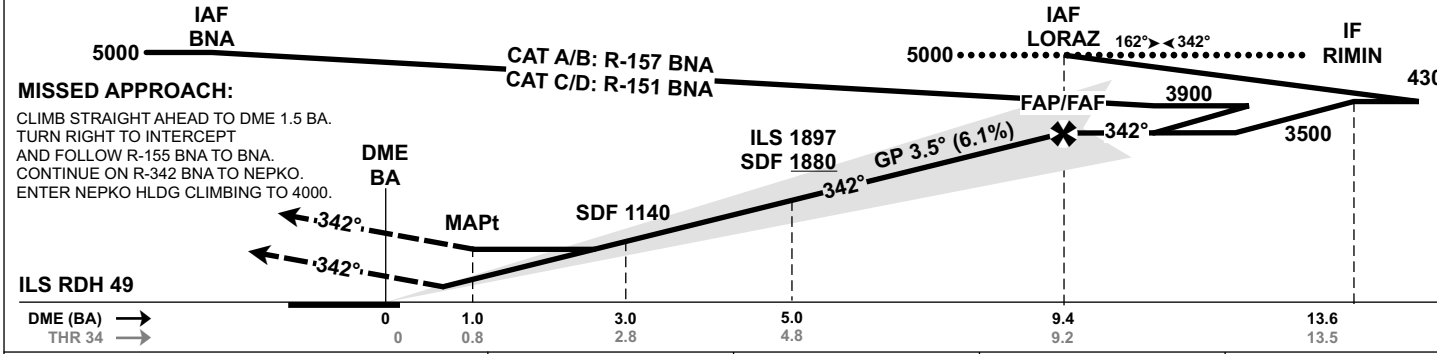
**ILS or LOC RWY 34**

TRANSITION ALTITUDE  
7000

<p>MSA 25 NM BNA</p>	ATIS: 136.325	AD ELEV: 26
	TWR: 118.900 118.050	THR ELEV: 25
	122.100	HGT RELATED TO THR 34
CIRCLING HGT RELATED TO AD ELEV		
DIST IN NM. ELEV, ALT AND HGT IN FT		
SCALE 1:350 000	VAR 13° E (2020)	



DIST TO BA	9	8	7	6	5	4	3	2
ALT (HGT)	3370 (3345)	3000 (2975)	2620 (2595)	2250 (2225)	1880 (1855)	1510 (1485)	1140 (1115)	770 (745)



OCA (H) STRAIGHT-IN	CAT I	A	B	C	D
	LOC	286 (261)	302 (277)	313 (288)	326 (301)
CIRCLING		670 (644)	980 (954)	1350 (1324)	2030 (2004)

NOTE: CIRCLING E OF AD ONLY.

ATS AIRSPACE CLASSIFICATION: REF ENR 1.4